

# 6. COL DEI PIAIS

## VALLEY PATHS

Natural Park of the Friulian Dolomites



**Col dei Piais is an elevation above the flood plain of the village of Claut. Its position is a reference point for the observation and knowledge of the geography both of the territory of the upper valley of Cellina, with its settlements, and that of the Friulian Dolomites Park, with its deep valleys topped by impressive dolomite walls.**

From the area named Conca Verde (with large parking), at the village of Claut, take the path that initially follows the river Ciadula; then you arrive at the village of Massurie (small church of St. Rocco), where you can observe characteristic courtyards that hold old houses now refurbished. From here the path continues uphill along a paved road and crosses a bridge (Pont del Ciafurle) overlying the same name gorge, then it continues still uphill until it reaches a first bend (church of the Italian alpine troopers on the right). To the close and next bend starts a trail, initially dug

into the rock, which later enters a pine wood (black pine trees) to continue always diagonally and in slightly uphill to reach a rustic cottage (Stalla Piais) located on a grassy knoll. The path becomes now horizontal and subsequently after a gentle slope it reaches a mountain pass where you can observe the larvae of the spotted salamander submerged in the water of an alpine pond. From the mountain pass the trail turns right, always uphill and following the track until it comes out of the woods, with a view of the Claut valley, and in a few minutes it arrives at the

top of the hill, which houses the small church of San Gualberto. The way back corresponds to the same route up to the saddle, and then it continues to the right (East), down through meadows and few woods (crossing a little stream) until it intersects the paved road. This latter should be followed to descend (leaving behind some small villages) until you reach and go beyond the church of the Italian alpine troopers, Pont del Ciafurle and the hamlet of Massurie, end point of the itinerary.

Village of Claut



Erica



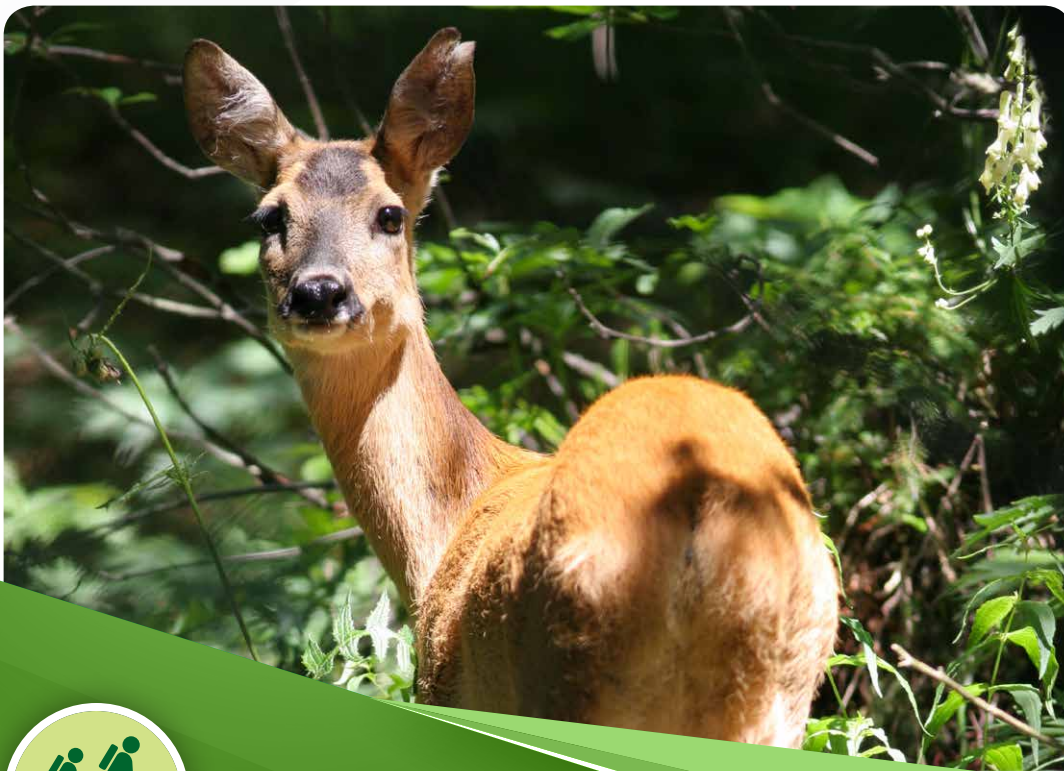
Col del Piais church



Trinity grass



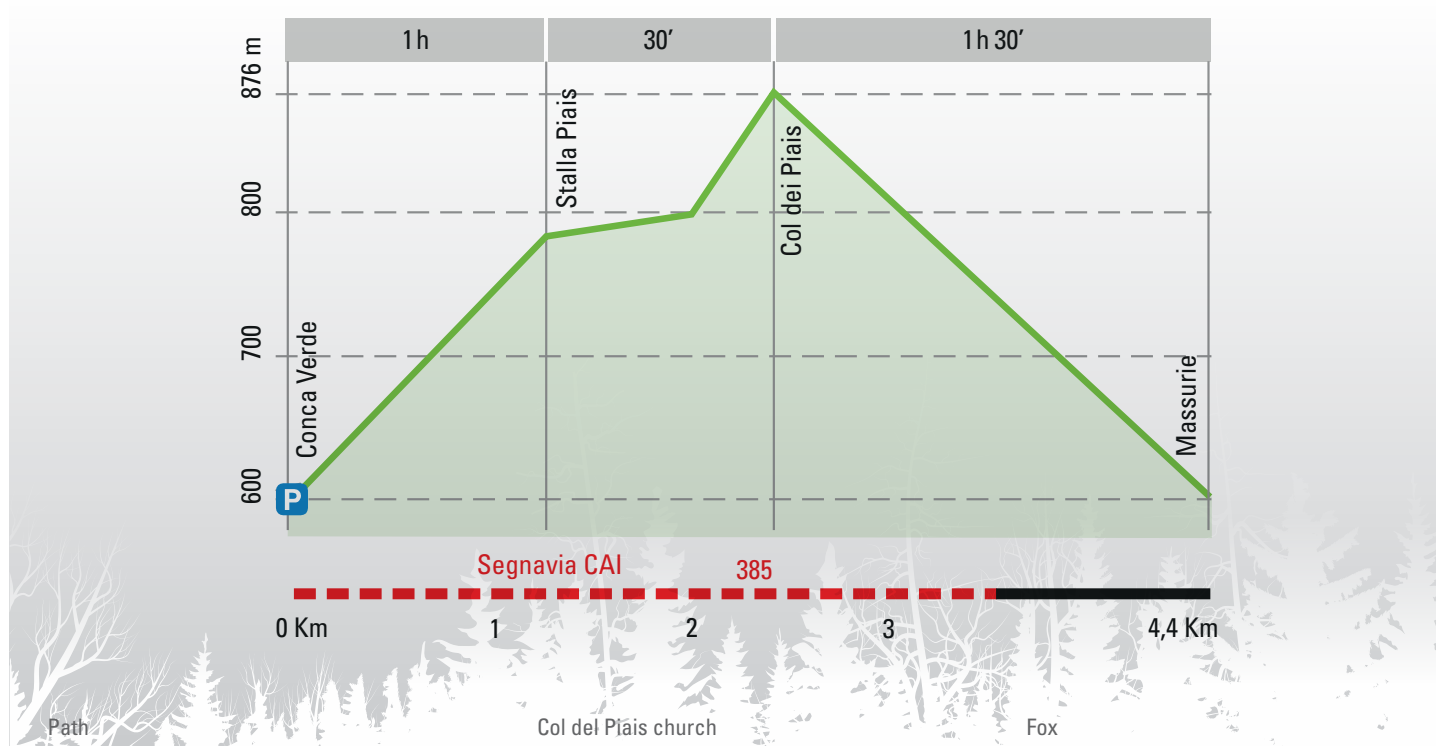
Roe deer



## PATH TAB

<b>Municipality</b>	Claut (PN)
<b>Starting point</b>	parking Conca Verde, in the center of Claut (600m)
<b>Arrival point</b>	center of Claut
<b>Recommended period</b>	from April to October
<b>Approximate walking time</b>	3-4 hours
<b>Peculiarities</b>	Geographic and ethnographic (territory management, spontaneous architectures), Geomorphological (flood plain, dolomite boulders)
<b>Points of interest</b>	Gorge of Ciafurl (natural gorge), flood plain of the river Cellina
<b>Markers</b>	CAI 385
<b>Cartography</b>	Map Edizioni Tabacco Natural Park Friulian Dolomites; And Edizioni Tabacco #021
<b>Support points</b>	not present

## PATH ELEVATION AND CAI DIRECTIONS





## PATH MAP

